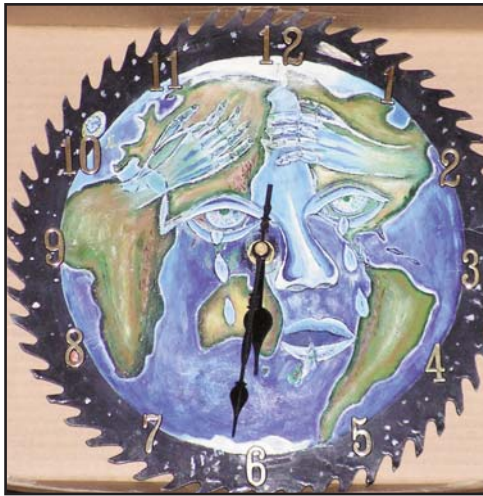


## Just Transitions



John Parker  
Gippsland Trades & Labour Council

Professor Peter Fairbrother  
RMIT University

The Gippsland Trades & Labour Council (GTLC) and RMIT University are working to build a future for Gippsland and the Latrobe Valley by identifying key challenges, exploring policy and developing practical approaches to sustainability and transition. Central to this is the development of a program to lay the grounds for a transition to a low carbon economy.

On 13th October 2010, together with employers, unions and local government, we established the Gippsland Community Transition Coalition. Their task will be to develop a transition strategy.

It is important that we approach these challenges drawing on experience and developing research in an informed way.

To do that we must know which jobs are at risk,

what assistance is needed to enable workers to make the transition and where are the real potentials for job growth.

We must find out what will be the skills demand for displaced workers, and what sort of strategies need to be put into place to stimulate job growth.

RMIT and GTLC will make an informed and positive input into the consideration of these challenges with the support of the State Government. We will utilise our resources to develop the research that is necessary. We are committed, we are funding and supporting events, and we have begun research on sustainability and transition in the Latrobe Valley.

There are two types of research that we need to take into account. There is much research into technological change and development, as well as the bio-science associated with low carbon developments. The other side of research focuses on economic and social transition and the cognate policy developments. This type of research should be promoted more extensively.

The best policy is evidence based and this is where social and economic research contributes.

The Latrobe Valley experienced mass redundancies during privatisation in the 1990s. We are determined that this will not happen again. We have the opportunity to ensure that we can move forward in a constructive way so that Gippsland stays vibrant and economically viable. We can start exploring social change in an informed way, taking into account the range of jobs and support in a community that is affected by the transition to a low carbon economy.

# The Crisis In Melbourne Hotels

## Rising prices condemn luxury hotel workers to poverty

Today's rise in the cost of living is piling financial misery on Melbourne's luxury hotel workers, who are already struggling to survive on poverty pay even as luxury hotels steal their wages and condemn them to dangerous working conditions.

The Australian Bureau of Statistics said today that the Consumer Price Index – the main measure of cost-of-living increases in Australia – rose by 0.7% in the third quarter of the year, bringing the rise in annual inflation to 2.8%.

"Most hotel room attendants are lucky to make \$450 a week," said Jess Walsh, Victorian secretary of LHMU Hotels Union.

"Today's rise in inflation means that room attendants at luxury hotels are falling even further behind," said Walsh.

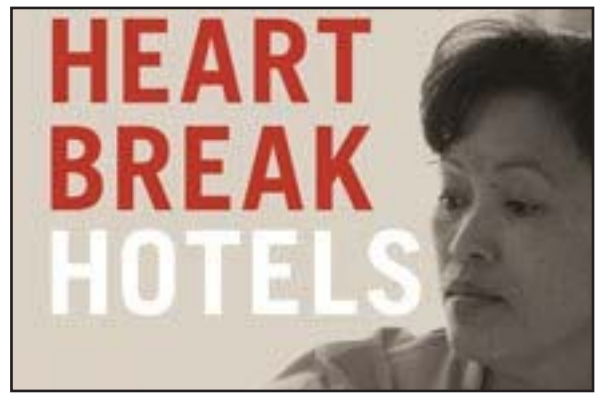
"Some of our most opulent hotels, like the Hilton and the Langham, are charging more and more for their rooms – as much as \$1500 a night – while the people who work so hard to clean them are being plunged deeper and deeper into poverty."

"Room attendants at Hilton's hotels in Melbourne have reported taking home an average of \$435.70 a week, while Langham workers tell us they earn \$464.70."

"And many Melbourne room attendants must work overtime to get their jobs done properly, extra hours for which they are rarely paid. These stolen wages could add \$10,000 a year to their income."

"Melbourne room attendants are so poorly paid that some are rationing food, falling behind in rent or mortgage and cannot afford to buy new clothes," Walsh said.

She said that many of the 330 four- and five-star



Melbourne hotel room attendants surveyed this year felt that prices were rising as wages were stagnating.

"In a recent survey of room attendants in Melbourne, we found that 87% said that wages were not keeping up with the rising cost of living," Walsh said.

Last week, the Salvation Army released its Perceptions of Poverty report, revealing there has been a "drastic increase" in the number of working poor in Australia.

Margarita Murray-Stark has been a room attendant for decades and in that time her pay has barely budged.

"I started 24 years ago and since then my pay has only increased by about \$8," Margarita says. "Everything else has gone up except our wages."

And the pain is likely to get worse, with analysts predicting that the RBA will soon hike interest rates, forcing up mortgages and rent for struggling room attendants.

"Christmas is always a very tough time for our room attendants, but this Christmas looks like being the bleakest of all," said Walsh.

"We are calling on luxury hotels like the Hilton and Langham to work with us to make these jobs better. Their workers are demanding fair pay, a fair workload and respect."

Full report available at:  
<http://www.lhmu.org.au/news/rising-prices-condemn-luxury-hotel-workers-to-poverty>

(Article from LHMU Website: <http://www.lhmu.org.au>)

## GIPPSLAND LEADERSHIP PROGRAM OPEN FOR APPLICATIONS

The Gippsland Community Leadership Program 2011 provides a great opportunity to build networks across the region and outside your own industry. The program runs over the course of a year, and includes 10 full-day seminars, held throughout Gippsland each two or three weeks.

### For further information:

Jenny O'Sullivan 5663 2386

or visit: <http://www.gclp.asn.au/>



**Gippsland Asbestos  
Related Diseases  
Support Inc**

# **ASBESTOS AWARENESS DAY**

**FRIDAY 26TH NOVEMBER 2010**

**11.00am**

**Morwell Rose Garden**

**Morwell**



*Asbestos Awareness Week is national recognised and honours those who have succumbed to asbestos disease and those who are suffering. It also campaigns to make the general public aware of the dangers of asbestos.*

**Free BBQ lunch at conclusion of ceremony**



For more information contact GTLC on 03 5133 7684

# WORKING WITH ASBESTOS SEMINAR

**Wednesday 1st December  
2010**

**9.30am - 3pm  
Wellington Room  
Port of Sale Civic Centre  
70 Foster Street  
SALE**

## **BUILDING & CONSTRUCTION SITES**

*Presentations from*  
Gippsland Trades & Labour Council Inc  
Gippsland Asbestos Related Diseases Support  
(GARDS)

Maurice Blackburn Lawyers  
WorkSafe Victoria will be in attendance

## **IN THE WORKPLACE**

Entry is FREE  
Bookings and Enquiries  
Tel GTLC on 03 5133 7684  
Email: [gtlc@wideband.net.au](mailto:gtlc@wideband.net.au)  
Book Early: Places Limited.

## **HOME RENOVATIONS**



SUPPORTING WORKERS AND COMMUNITIES



**Maurice  
Blackburn**  
Lawyers

Since 1919



## **VICTORIAN TRADE UNIONS SAY 'NO' TO VIOLENCE AGAINST WOMEN**

As part of 'White Ribbon' this year, officials from all affiliates are invited to Federation Square on Thursday 25<sup>th</sup> November to participate in the 'Not 1 More' event.

Unions have been allocated time between 4.00pm – 4.30pm when officials – both men and women - will be able to come down and take the 'White Ribbon' pledge **not to commit, excuse or remain silent about violence against women.**



We encourage all affiliates to send down a delegation to participate.

And we hope that at least some of you will be prepared to take the White Ribbon pledge 'on camera'. That way, after the event we can put together a short compilation DVD under the title 'Victorian Trade Unions say 'No' to violence against women' for use in future campaigning activities. A copy will also be provided to each participating union.

The ASU – Vic Authorities and Services branch is coordinating the segment with support from VTHC.

Please RSVP by Friday 5<sup>th</sup> November  
advising which leader/s from your branch  
will be attending to take the pledge.

Contact Jennifer O'Donnell-Pirisi at [JODonnellPirisi@vthc.org.au](mailto:JODonnellPirisi@vthc.org.au)

# Justice for refugees



# End mandatory detention

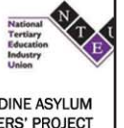
**RALLY AND MARCH**  
**2PM SUNDAY NOVEMBER 7**  
**State Library, Swanston & La Trobe St, City**



**REFUGEE  
ADVOCACY  
NETWORK**



**THE  
GREENS**





# COMMUNITY LINK

Getting the message out



G.A.R.D.S.

GIPPSLAND ASBESTOS RELATED DISEASES SUPPORT INC.

Provides support & information to asbestos sufferers, their families & carers.

41 Monash Road,  
Newborough, Vic. 3825  
Phone: 5127 7744  
Fax: 5126 0354  
Mobile: 0407 274 173

Email: [info@gards.org](mailto:info@gards.org)  
Web: [www.gards.org](http://www.gards.org)  
Call in for a chat and a cuppa



## COMMUNITY GROUPS INFORMATION FORUMS

Planning and Running Successful Events

Wednesday 17 November 2010

This Community Groups Information Forum will give community groups and not for profit organisations the tools required to run a safe and successful event in Latrobe City.

Some of the Topics covered on the night include:

- ☞ Planning Tips
- ☞ Legal requirements
- ☞ Funding opportunities
- ☞ Council support.

The revised Latrobe City Events Planner will be launched at this session.

Date: Wednesday, 17 November 2010  
Time: 6.00pm to 9.30pm

Venue: The Ambassador Function Centre,  
Fairway Drive,  
Morwell  
(formerly Falcons Park).

Light Refreshments available from 6.00pm to 6.30pm.

Book early to avoid disappointment!

The Forum will be delivered by the Latrobe City Council Events Team.

Contact:  
Teresa Pugliese  
Telephone: 1300 367 700  
or email  
[teresa.pugliese@latrobe.vic.gov.au](mailto:teresa.pugliese@latrobe.vic.gov.au)

RSVP by:  
by Wednesday, 10 November 2010.



Date	Topic	Time & Venue
Wednesday 23 February 2011	Managing challenging behaviours and conflict within community groups.	6.00 pm to 9.30 pm Quality Inn, Latrobe Convention Centre, Traralgon
Wednesday 20 April 2011	Running effective meetings.	6.00 pm to 9.30 pm The Ambassador Function Centre Fairway Drive, Morwell
Wednesday 22 June 2011	Community Grants.	6.00 pm to 9.30 pm Quality Inn Latrobe Convention Centre Traralgon

# JUNIOR FISHING COMPETITION

**Saturday 6 November 2010**  
**Lake Hyland, Churchill**

**\*HEAPS OF PRIZES TO BE WON!**

All Junior Anglers Aged Between  
4 and 16 Welcome

Juniors **MUST** be accompanied by an adult  
Only one fishing rod per competitor



Guest Appearance:

**Jason Kennedy**

from

**Fishin' Trip**

Entry: \$2

Family: \$5

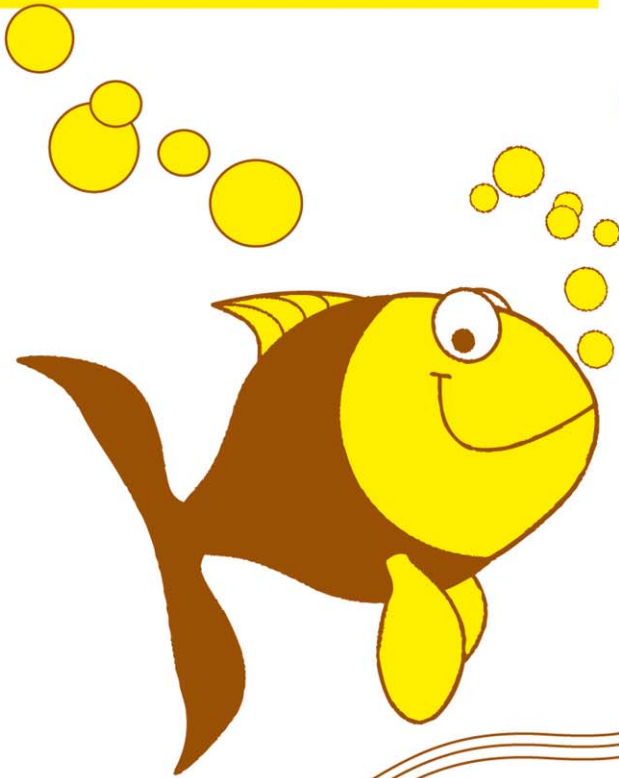
Entry Includes:

Sausage Sizzle & Drink

**Registration From: 7.45am**

**Fishing: 8am - 2pm**

Beginners Welcome: Fishcare will be on hand to  
show you the basics and get you started



*Mathison Park has Wheelchair Accessible Fishing Platforms*



GIPPSLAND TRADES  
&  
LABOUR COUNCIL INC  
Supporting Workers and Their Communities



International Power  
Hazelwood



CHURCHILL & DISTRICT NEWS

**Fishin' Trip**  
www.fishintrip.com.au



# STATION 2 SUMMIT

## Adventure Challenge



YARRAGON  
Pre-School



Come to 'The Summit'  
Sunday 14th November 2010  
10am - 4pm

Watch & Support Your Favourite  
Emergency Service Team  
participating in...

- \* Professional Laser Skirmish
- \* Monster Obstacle Course
- \* 4wd Challenge
- \* Giant Wall & Mud Pits

**FREE**  
ADMISSION

Enjoy a great Family Fun Day

- ✓ Yarragon Lions Catering
- ✓ Face Painting
- ✓ Reptile Enclosure
- ✓ Live Entertainment
- ✓ Emergency Service Vehicles
- ✓ Flying Fox
- ✓ Show Bags
- ✓ Lucky Dips
- ✓ Giant Swing
- ✓ Swig Coffee

Locally  
Sponsored Teams:

- \* Redback Windows CFA
- \* StuMac Plastering CFA
- \* RACV Ambulance
- \* Phazers Ambulance
- \* Farm Depot SES
- \* Warragul Insulation SES
- \* Trafalgar Foodworks Police
- \* Purdy's Police

[www.thesummit.net.au](http://www.thesummit.net.au)

**21 Cemetery Road, Trafalgar East**

For further information contact meg 0438 514 027

Published by:

# Gippsland Trades & Labour Council Inc

8- 10 Elizabeth Terrace

PO Box 240

Morwell 3840

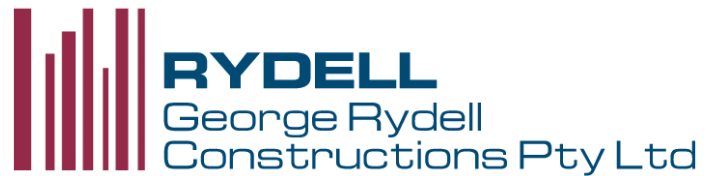
Tel: 03 5133 7684

Fax: 03 5133 3313

Email: [gtlc@wideband.net.au](mailto:gtlc@wideband.net.au)

Website: [gippslandtlc.com.au](http://gippslandtlc.com.au)

**Proudly supported by**



**If you would like assistance in  
getting your message out,  
just give us your details and we will  
endeavour to help**

*The Gippsland Trades and Labour Council wishes to advise that the views or remarks expressed in this newsletter are not necessarily the views of the Council or any of its members or affiliates.*